

#whdentalwerk



video.wh.com

Now at
your dealer
or **wh.com**



“The

ONE



that speeds up
MY daily operation.”

quick
connect
by W&H

assistina^{ONE}



The ONE for a new level of maintenance

Assistina One is the first choice for maintaining dental transmission instruments, including handpieces, air motors and air scalers. The new generation of the W&H single-port device is equipped with the exceptional Quick Connect System for switching between handpieces. It can be easily adapted to individual needs and fits perfectly into every workflow.



Removable rotating window
Seals the maintenance area and can easily be removed



One-touch start button
For intuitive use and easy handling

Fast cycle time

Just 18 seconds for the entire lubrication and cleaning process



Ready-to-use refill cartridges

For easy, neat and fast replacement of Service Oil and Activefluid



HEPA filter

To meet hygiene standards and a clean working environment



Flat, smooth surfaces

For thorough device cleaning



The ONE for perfect care

The entire lubrication and spray channel cleaning process only takes 18 seconds, making the Assistina One the fastest maintenance solution in its class. It only works with compressed air; no electric power supply is needed. The unit is set up and ready to go in no time at all. Together with the one-touch start button and convenient cartridge management for refilling oil and cleaning liquids, the Assistina One is a modern maintenance solution for dental practices with high standards in handpiece care.



Quick Connect System

Flexible switching between handpieces with Quick ISO and Quick RM adaptors

“The

ONE

that truly
supports ME.”



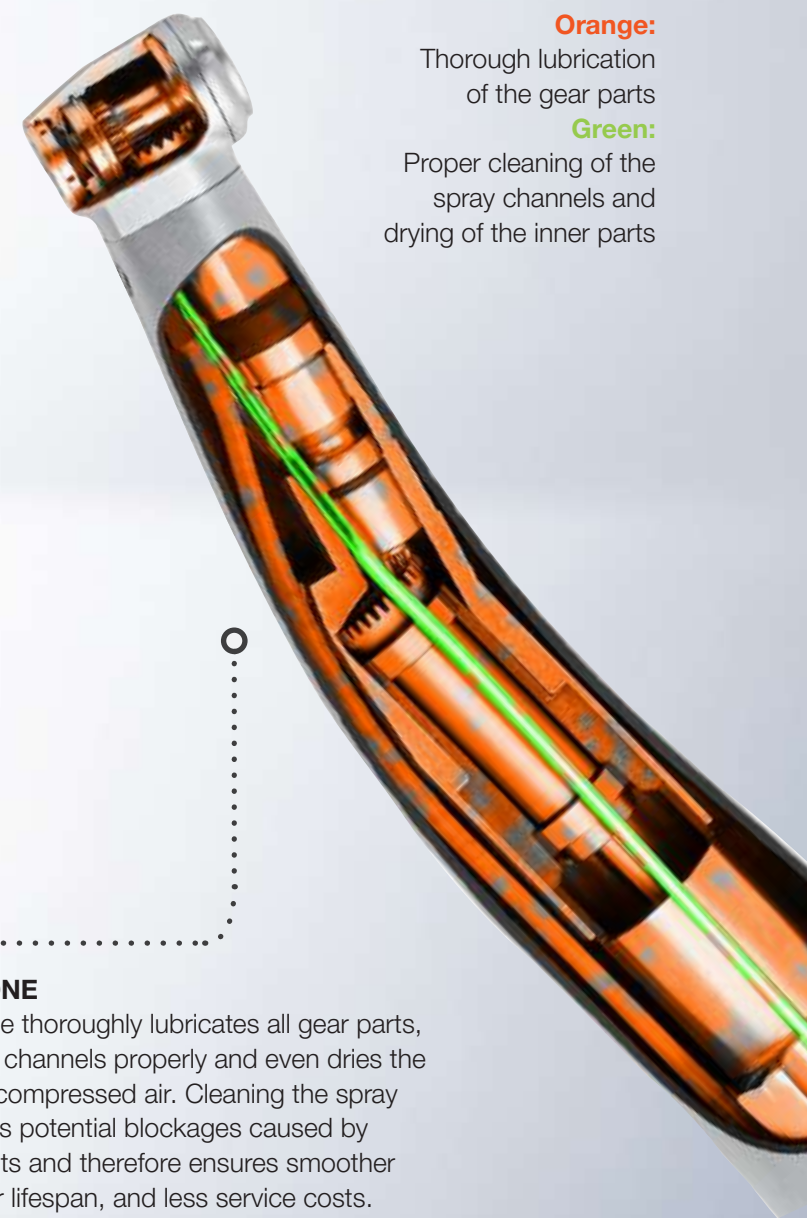
The thorough ONE

High-quality transmission instruments require high-quality care. In fact, proper and professional maintenance plays an essential role in the longevity and value retention of handpieces. The maintenance unit ensures perfect care and performs the correct lubrication cycles crucial for the function and long service life of dental handpieces.

The efficient ONE

With the ground-breaking technology of oil nebulisation, dental transmission instruments are lubricated even faster and more thoroughly than ever before. The oil is first atomised in the adaptor to a fine oil mist, which is then blown into the transmission instrument at high pressure. Debris from inside the transmission instrument is removed, and all gear parts are lubricated without putting them in motion. With the active suction and HEPA filter, aerosols are removed from the chamber, keeping the working environment clean and safe.

Orange:
Thorough lubrication
of the gear parts
Green:
Proper cleaning of the
spray channels and
drying of the inner parts



The effective ONE

The Assistina One thoroughly lubricates all gear parts, cleans the spray channels properly and even dries the inner parts with compressed air. Cleaning the spray channels reduces potential blockages caused by limescale deposits and therefore ensures smoother operation, longer lifespan, and less service costs.

The convenient ONE

The Assistina One is tailored to the needs of those who work with it. Different adaptors for high flexibility, intuitive design for convenient use and outstanding maintenance results: this new generation of a single-port maintenance solution takes the care of handpieces, motors and scalers to a new level.



The quicker ONE

Thanks to the revolutionary Quick Connect System by W&H, switching between handpieces has never been easier. Simply connect the Quick ISO or the Quick RM and start maintaining all transmission instruments with a standard ISO or 4/6-hole connection. Thanks to its wide range of adaptors, the Assistina One can meet the requirements of all clinics.

Quick RM for turbine handpieces



Quick ISO for straight and contra-angle handpieces

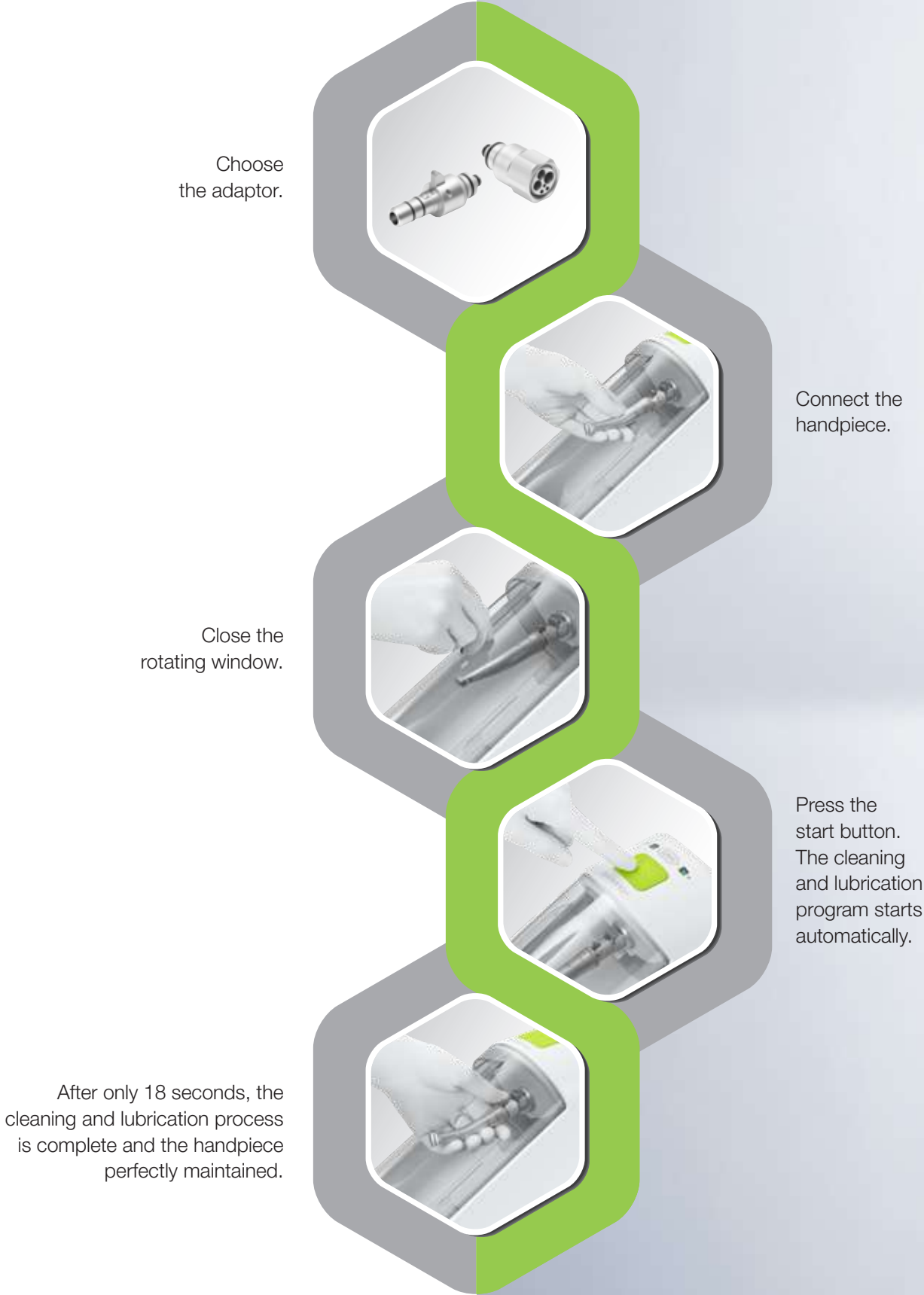


The flexible ONE

For brand specific connections, like Roto Quick, select the right adaptor, connect it easily and start! Scan the QR code for the complete adaptor portfolio.



The ONE that makes MY workflow easier



The ONE and only oil



ONE versus 20



The Assistina Care Set yields as much as 20 oil spray cans MD-400*. Thus, more than 2,800 handpieces can be maintained, saving money, time, and waste. With maximum lubrication at minimum consumption, Assistina One is a highly economical solution.

#whdentalwerk
f @ in v
video.wh.com

Now at
your dealer
or wh.com



“The

ONE

that makes
ME smile.”



Fast, thorough, and easy to use

Assistina One speeds up daily operations and facilitates dental handpiece care. With the shortest cycle time in its class and its high-quality care results, the innovative maintenance solution is a top dental device – designed for top dental professionals.

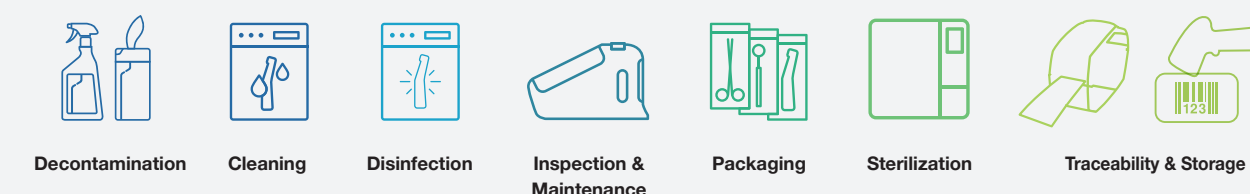
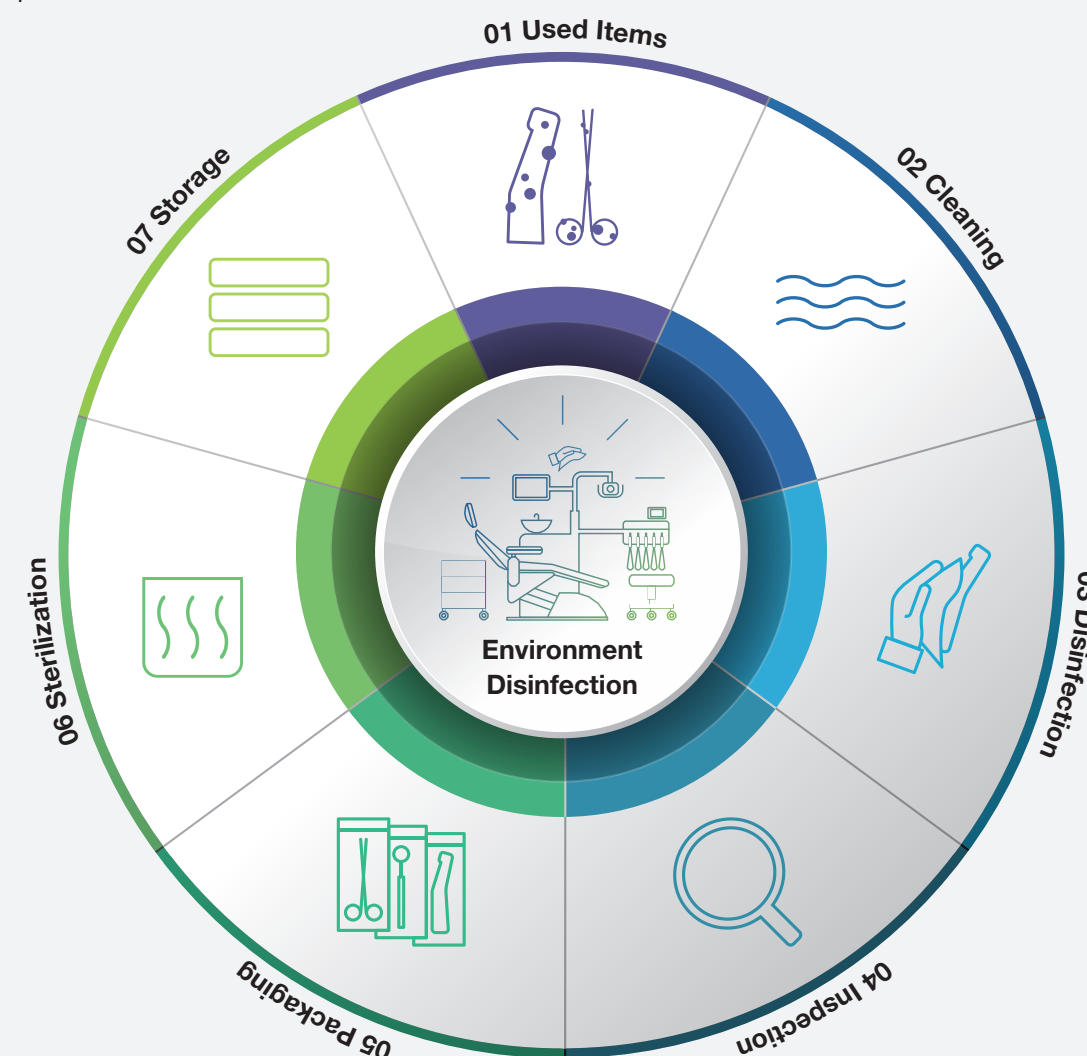
assistina ONE

W&H AIMS Safety first!

aims Advanced
Infection Prevention
Management Solutions

Hygiene is extremely important in the dental practice. W&H AIMS is here to help: with a wide product portfolio, fundamental knowledge and all relevant information at a glance.

For your safety and the safety of your patients. aims.wh.com



Technical Data

Trade name: Type:	Assistina One MB-301
Process:	Cleaning the spray channels, lubrication
Suitable for:	Straight and contra-angle handpieces, turbine handpieces, air scalars, air motors
Air consumption:	approx. 50 l/min.
Operating pressure:	5–10 bar (controlled via an integrated, automatic pressure controller)
Dimensions (w × d × h):	166 × 383 × 243 mm
Weight:	2.2 kg
Capacity:	200 ml W&H Activefluid cleaning solution 200 ml W&H Service Oil F1



Assistina One Care Set

Each set includes a cartridge of cleaning solution, a cartridge of Service Oil F1 and a HEPA filter. All consumables are easy to replace without any tools.

W&H Dentalwerk Bürmoos GmbH
 Ignaz-Glaser-Straße 53, Postfach 1
 5111 Bürmoos, **Austria**
t +43 6274 6236-0
f +43 6274 6236-55
 office@wh.com
wh.com

Pictures are for illustrative purposes only. Additional equipment and accessories shown are not included as standard.

20562 AEN Rev. 001 / 15.11.2023
 Subject to alterations