

PIEZON[®] 250

→ NEW PIEZON[®] DESIGN

ORIGINAL
PIEZON[®]
METHOD

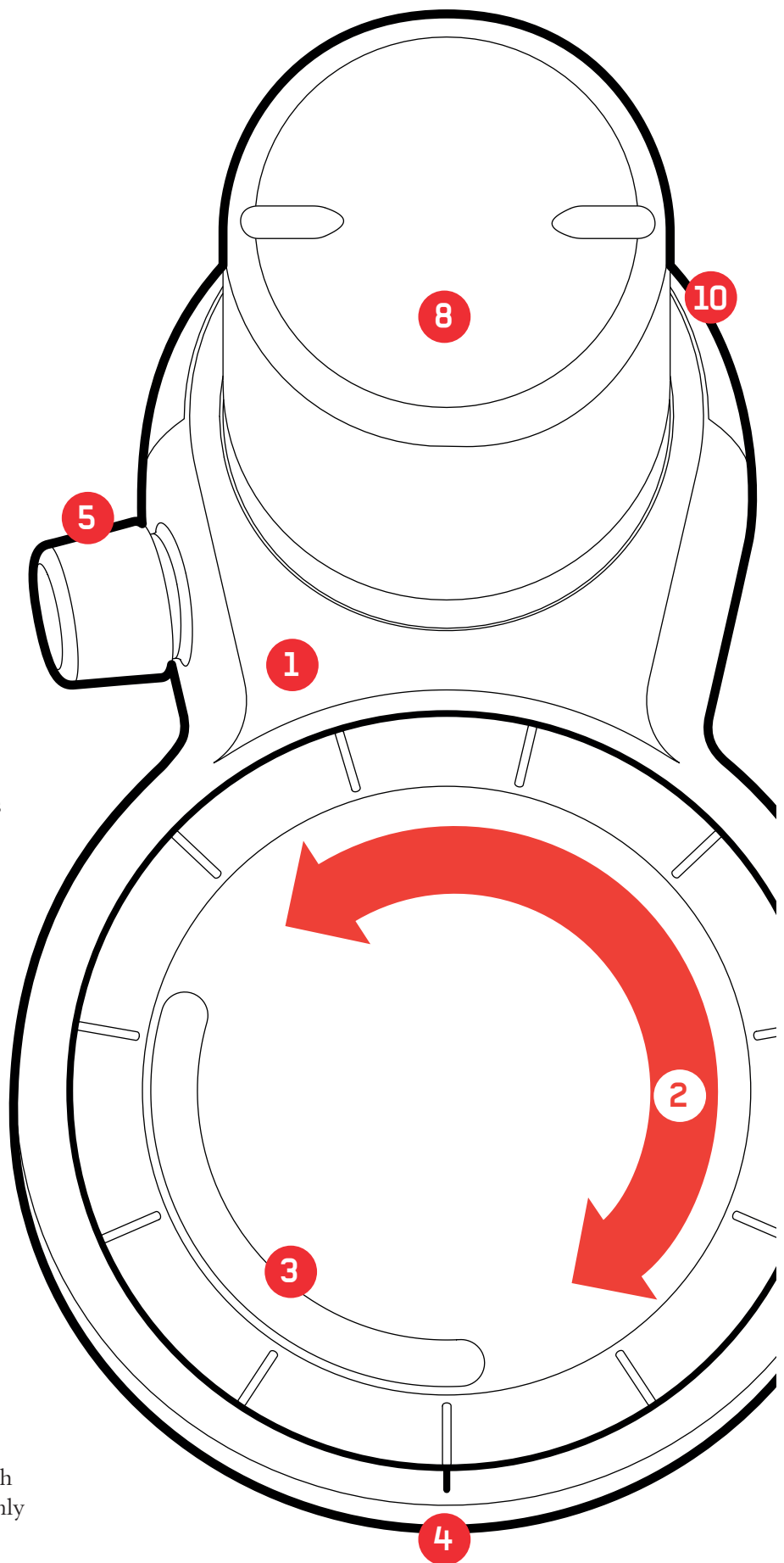


POINT-BY-POINT CONVENIENCE

- 1 Original Piezon® technology inside
- 2 Finger-tip power control
- 3 Soft perio power zone
- 4 Power level LED indicator
- 5 High-precision fluid regulator
- 6 Original Piezon® LED handpiece
- 7 Original EMS Swiss Instruments^{PM} in CombiTorque®
- 8 Quick-connect bottle 350 and 500 ml
- 9 Handpiece hose with easy-fit connectors
- 10 Peristaltic pump quick-clip cover

1:1

> The ultra-compact
Piezon® 250 – stand-alone with
a footprint of 150 x 215 mm only



ORIGINAL PIEZON®

→ THE 250

DESIGNED FOR INTUITIVE USE



FINGER-TIP POWER CONTROL

- > Large ergonomic and effortless power regulator for simple and precise power setting
- > 35 LED-indicated power increments, including On/Off

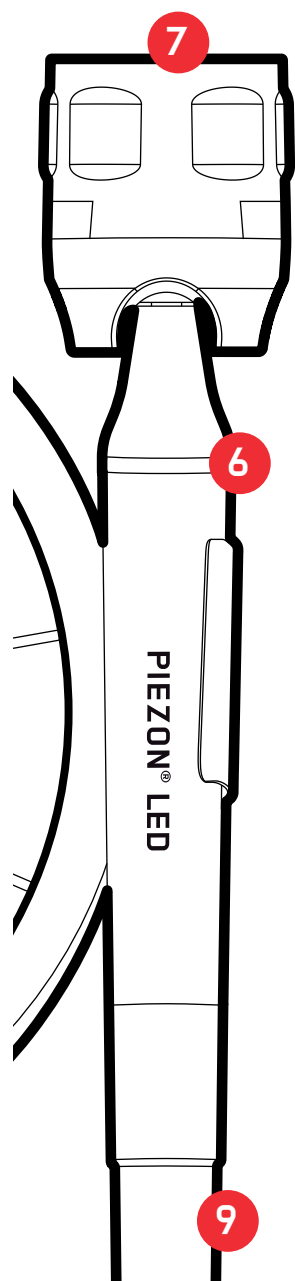
20 sec LIGHT ASSIST TIMER

- > 6 LED lights continue to illuminate for 20 seconds after foot control release without instrument movement or irrigation
- > The strong daylight quality LED's aid diagnosis

MAXIMUM USER AND PATIENT COMFORT

- > Original Piezon® Method is a guarantee for exceptional quality and durability
- > New ultrasonic electronic module for improved scaling efficiency
- > High-end performance and maximum safety in each and every clinical situation
- > Instantaneous tip amplitude adjustment for smooth treatment and ultimate patient comfort
- > Exceptionally low operating noise level

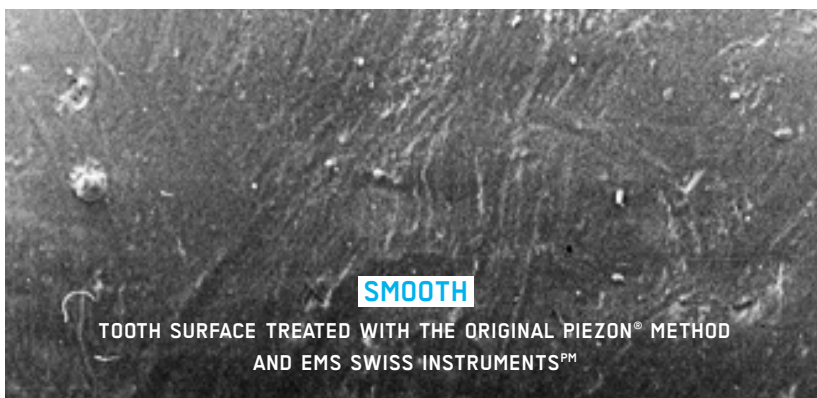
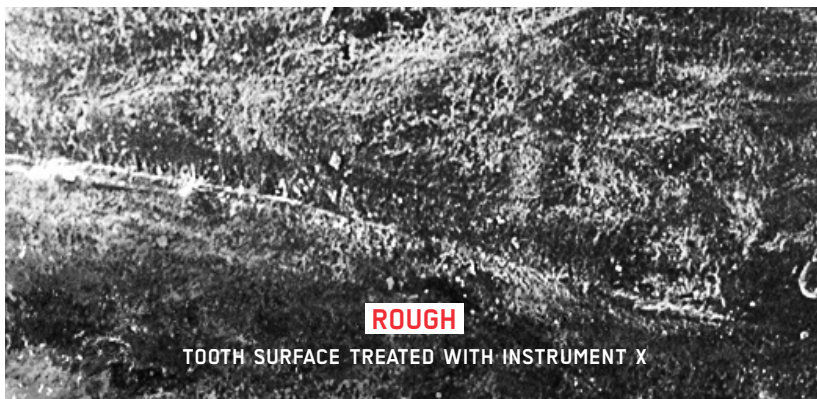
> EMS Swiss Instrument PS with Piezon® handpiece LED



**ORIGINAL
FROM THE
INVENTOR**

© EMS SA FA-433/EN Edition 01/2013

HIGH EFFICIENCY, CONTROLLED TIP OSCILLATION AND REAL-TIME POWER ADJUSTMENT → **ALL IS ALIGNED**

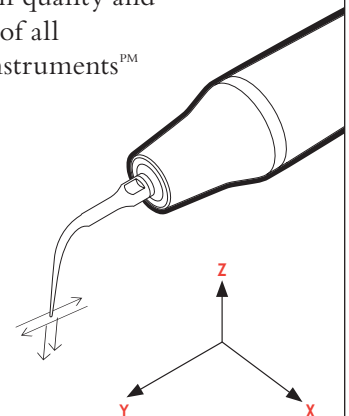


Photos: P. Schmage, Y. Schultz, U. Platzer, S. Maisch, I. Nergiz, Hamburg University, Germany

ORIGINAL PIEZON® METHOD →

ESTABLISHED SUCCESS

- > Absolutely linear oscillation action
- > Permanent feedback control and real-time power adjustments for maximum safety and efficiency
- > Premium quality and mirror finish of all EMS Swiss Instruments^{PM}



PIEZON® 150 AND 250 WITH LED*

- > Multifunctional - from scaling and perio to safe endo and restorative
- > Complete with Original Piezon® LED handpiece, 2-step 360° foot control and 3 EMS Swiss Instruments^{PM} A, P, PS, each in CombiTorque®
- > Piezon® 250 with stand-alone water supply, Piezon® 150 with permanent water line connection and external water filter for enhanced infection control

* Optional without LED



EMS-SWISSQUALITY.COM

For more information contact welcome@ems-ch.com