

KaVo MASTERspace®

Prosthetic perfection,
realized with
KaVo MASTERspace!



KaVo. Dental Excellence.

Benefit from greater efficiency.

Discover greater efficiency and motivation for your dental laboratory.

As one of the world's largest system providers, KaVo has accumulated decades of competence in high-quality laboratory equipment. With a high-performing team of experienced planning specialists, we develop installation solutions that are exactly customised to meet your requirements.

In this context increased efficiency and the motivation of your co-workers are central for our approach. We meet this high demand by optimising procedures as well as by ergonomic and functional planning and design of your workplaces.

As a laboratory technician, high-standards and precision come as second nature. Therefore the KaVo MASTERspace® is the natural choice. You get your perfect laboratory equipment in the three equipment lines presented on the following pages:

KaVo MASTERspace® Select
KaVo MASTERspace® Classic
KaVo MASTERspace® Basic



The three equipment lines.

KaVo offers you three equipment lines for your new laboratory installation. Depending on your requirements, decide in favour of MASTERspace Select, MASTERspace Classic or MASTERspace Basic.



- KaVo MASTERspace® Basic**
- Convincingly economical**
- Single-workplace solution without dust extraction.
 - Material cabinet including three powder-coated metal drawers.
 - Front selectable from standard colours in single-colour, handles matt chromium plated.



- KaVo MASTERspace® Classic**
- Superior form and function**
- With SMARTair® single-place dust extraction.
 - With EXTRAmatic® dust extraction unit for three workplaces.
 - Suction hood front table.
 - Front colours selectable from standard colours in single- or two-colour, handles matt chromium plated



- KaVo MASTERspace® Select**
- Perfect in function and design**
- With EXTRAmatic® multi-user dust extraction unit for the single and the three-person workplace.
 - Retractable armrests, suction hood and functional drawer
 - Front selectable.

Equipment lines	MASTERspace Basic	MASTERspace Classic	Select
SMARTair for single-place dust extraction	–	•	–
EXTRAmatic for single-place dust extraction	–	–	•
EXTRAmatic for multiple-place dust extraction	–	•	•
Retractable armrests	–	–	•
Retractable extraction hood	–	–	•
Extraction hood front table	–	•	–
Functional drawer	–	–	•
Front colours	Single-coloured	1-/2-coloured	Multicoloured
Handles	Metal handles chromium matt	Metal handles chromium matt	Metal handles chromium matt

• Standard version – not available

KaVo MASTERspace Select.

Timelessly beautiful design.

KaVo MASTERspace Select is the equipment line offering you perfection in function and design.

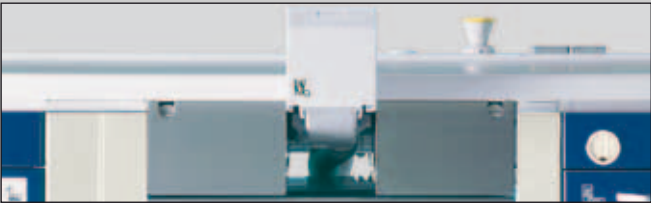
The functional drawer as well as the retractable armrests and the extraction hood are examples of highest functionality down to the smallest detail.

Both the single workplace and the three-person workplace of the MASTERspace Select are equipped with the multi-place dust extraction unit EXTRAmatic.

MASTERspace Select:
Experience perfection.



Retractable armrests



Retractable extraction hood



Three-person workplace MASTERspace® Select with EXTRAmatic® and design package.



Single workplace MASTERspace® Select with EXTRAmatic® and design package.

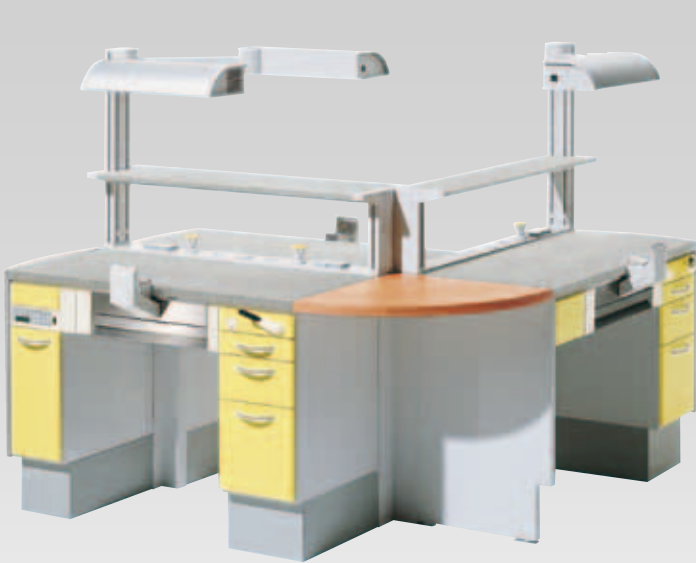
KaVo MASTERspace Classic.

Convincing to the smallest detail.

KaVo MASTERspace® Classic is the economical alternative for all workplace solutions where dust extraction equipment is mandatory.

The single workplace is equipped with the SMARTair® single dust extraction unit, the three-person workplace with the EXTRAmatic® multiple-place dust extraction unit. MASTERspace® Classic is also available with function package and design package.

MASTERspace Classic:
Work confidently.



Three-person workplace MASTERspace® Classic with EXTRAmatic® and design package.



Single workplace MASTERspace® Classic with single dust extraction SMARTair® and function package.

KaVo MASTERspace Basic.

Working without dust extraction.

KaVo MASTERspace Basic is the ideal solution for single workplaces where dust extraction is not required. The equipment line Basic fits perfectly into the MASTERspace generation and can thus be ideally combined with KaVo MASTERspace Select or Classic. A material cabinet including three powder-coated metal drawers offers sufficient storage space. The waste drawers are made of high-quality stainless steel.

As a matter of course the Basic line is also available with function and design packages.

MASTERspace Basic: Convincingly economical.



MASTERspace® Basic single workplace with function package.



MASTERspace® Basic single workplace standard design.

Convincing function and design.

With the KaVo function and design packages, you supplement your MASTERspace laboratory equipment quite specifically depending on workplace requirements and your personal style.

These optional packages can be used for all three lines, MASTERspace Select, Classic, and Basic.

An example of the enhanced functionality of the singular design is given by the KaVo workplace lamp

Due to its illuminance and contrast, the KaVo operating light is indispensable for all high-precision jobs.

- 2 x 36 W, Electronic ballast, 2,300 LUX performance (measured at a lamp-table distance of 62 cm).
- Distinctly longer service life by temperature-controlled fan cooling.
- Even light distribution and low reflection due to light grid.

MASTERspace design packages



Design package single workplace consisting of single workplace lamp, worktray board, storage board, back screen and arch screens.



Design package group workplace consisting of single workplace lamp, double workplace lamp, 2 worktray boards, 3 storage boards and 3 arch screens.

Highlights and advantages for you:

- Thanks to the individual KaVo 3-D laboratory planning, the work sequences are optimised, and the efficiency of the dental laboratory is increased.
- Superior design with the highest quality of workmanship and conservation of value.
- Optimum workflow is ensured by thought-out arrangement of the functional elements.
- Technically most advanced suction technology with KaVo SMARTair and KaVo EXTRAmatic for optimum functionality and clean laboratory air.

MASTERspace function packages



Function package single workplace: Consisting of single-place lamp and work tray board.

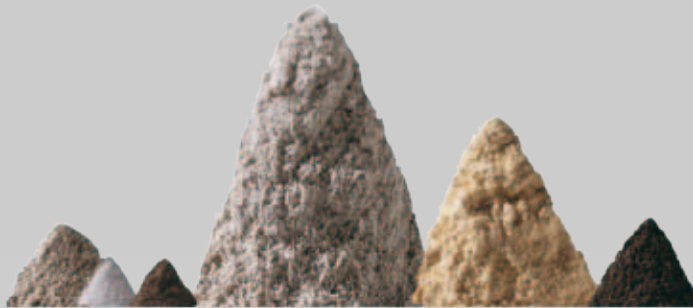
Function package group workplace: Consisting of single-place lamp, two-place lamp and 2 work tray boards.

Breathe safely.

The lung is endangered.



The lung is particularly endangered by very fine dust. Very fine dust is the proportion of the total inhalable laboratory dust whose particles are smaller than 5 µm. Due to its fineness it can easily penetrate into the deepest parts of the respiratory tract, the alveoli, and can there trigger the dreaded silicosis as a consequence of continuous tissue response.



Ceramics steel noble metal methylmetacrylate gypsum others

Therefore protect yourself and your laboratory personnel reliably. *Ø dust exposure/year and dental technician.* With KaVo dust extraction units.

KaVo laboratory extraction units are the result of over 20 years of experience in laboratory dust extraction – for your health.

KaVo EXTRAmatic: The multiple-place dust extraction unit

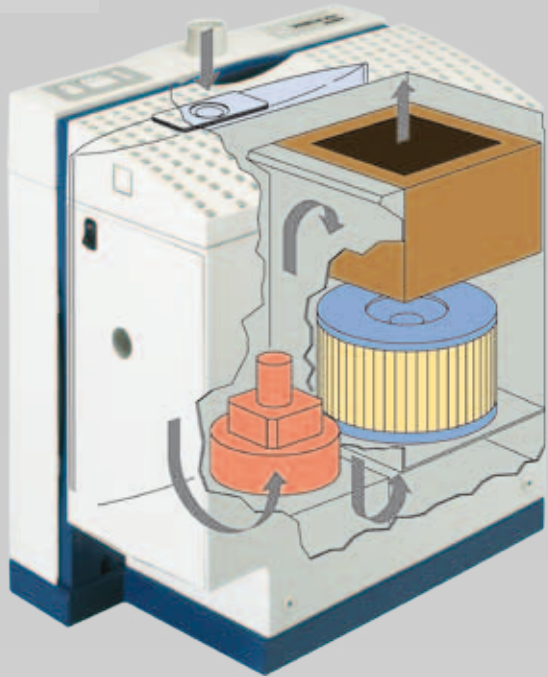
Dust extraction is something many can do. However, the real benefit of a perfect dust extraction unit becomes evident only in the combination of optimum suction power and high functionality. Whether at the workplace proper or at the devices in the functional area does not matter.

- ABSORBA long-term filtering system with integrated duplex safety filter.
- With the optionally inserted activated carbon filter, your KaVo EXTRAmatic® also simultaneously removes quite varied materials as well as plastic vapours.
- Thanks to the switch-on automatic, the suction motor works only when air is required and thus saves valuable energy as opposed to central extraction systems.
- The intelligent KaVo self-cleaning system saves filter and disposal costs day after day.
- If desired, purified exhaust air is fed back, thus saving money for heating your laboratory.
- The extraction level can be individually programmed for each of the up to three extraction locations and thereby offers perfect extraction management.
- Useful accessories enable integration of the KaVo EXTRA-matic® into any laboratory equipment program, any other workplace and best of all into the KaVo MASTERspace® and FLEXspace® concepts.



KaVo SMARTair plus: Single-place dust extraction

- Active health protection: filter type M for removal of fine dust; activated carbon filter for odour reduction
- Very low-noise owing to automatic extraction level adjustment and switch-off automatic
- Flexible solutions (mobile or desk mounting) version "Filter drawer" also suitable for mounting in tables from other manufacturers
- Continuously high suction
- Longer use of the filter bags
- Automatic shutdown when filter is full



The integrated solution is ideal for technicians' tables. The drawer concept offers maximum comfort for the technician.



The mobile solution is primarily used in the functional area of the dental laboratory and also where spatial restrictions prevent an integrated solution.

Sitting posture must be healthy.

KaVo SENSit® – tailor-made for the dental laboratory.

The KaVo engineers have developed a chair that takes into account all health aspects of the sitting position. The anatomical design of the seat and the backrest supports the body precisely where it is necessary. And the shape and functionality of SENSit are ideally adapted to the working conditions in the laboratory. Ingeniously thought out to the smallest detail. For a relaxed, body-friendly sitting position while maintaining maximum freedom of movement.

Material

Slip-resistant, moisture-permeable, easy to clean, kind to the skin. The seat and backrest cushions can be very easily exchanged.

Seat

The seat precisely adapts to the individual anatomy of the person. The upholstery is specially designed for the typical bent posture working position of the dental technician. This avoids excessive pressure. You can move the seat forward and backward.

Variable

With the SENSit you always sit at the right height.

Backrest shape

The backrest shape is specially designed for work in the laboratory, it supports the spine and supports your back comfortably and safely.

Height adjustment

The backrest height can be adjusted so that the upholstery is always in the right area of the back.

Synchronous mechanism

Backrest and seat are articulately jointed. When the backrest opening angle increases, then the seat also bends back.

KaVo SENSit® – the fine adjustment of the perfect seating position.

Have a seat! And do not hesitate to lean back and relax! Studies have shown: When sitting for a longer period of time, then changing the sitting posture is particularly important.

The seat can be moved horizontally so that the contact with the backrest is optimally adapted to the physique.

Change of position made easy: You determine to what extent seat and backrest bend! Lift handle. Strain backrest. Lock mechanical system. Done!

The height adjustment of the backrest permits individual adjustment of the chair to your body height.

Whether short or tall, the spine is always properly supported: Thanks to the height-adjustable backrest the special upholstery is where it should be.

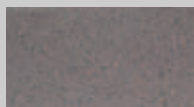
You can individually adjust the resistance of the backrest: Turn the adjusting wheel and set the force of the synchronous mechanism to your body weight. Thus you always sit comfortably.

The robust aluminium pedestal: High load-bearing capacity and long service life due to excellent material quality.

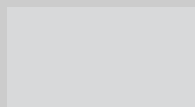
Here you have the choice.

MASTERspace

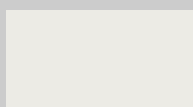
Table top coatings



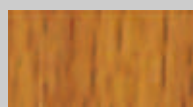
ROCKdent



FORMdent
Agate grey



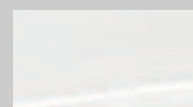
Laminat
Carrara



Multiplex
Beech

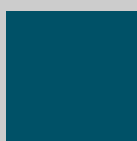


Corian®
dark



Corian®
bright

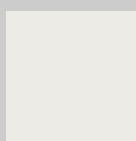
Fronts



Gentian blue



Tourmaline-anthracite



Carrara



Sunflower



Orange



Bordeaux

Base



Stone grey

SENSIT

Fabric "Extreme"



stahlblau/
steel blue



titangrau/
titanium grey



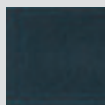
korallrot/
coral

- 100% Xtreme FR
- 400g/m

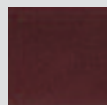
Fabric "Microtouch"



saphirblau/
sapphire



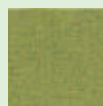
tiefseeblau/
ocean blue



aubergine/
aubergine

- 88% Polyester
- 12% Polyurethane/PU
- 385 g/m

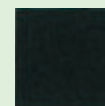
Fabric "Eccos"



olivingrün/
olive green



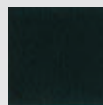
polarsilber/
polar silver



schwarz/
black

- 9% Ramie
- 91% Wool
- 546 g/m

"Leather"



schwarz/
black

- 100% Leder/
leather



KaVo. Dental Excellence.