

VIBRATORS MINIEXPORT - MIDIEXPORT - EXPORT 2 - MAXI 2



DESCRIPTION

This line of vibrators has been designed specifically for use in the Dental Laboratory for the casting of models in investment material using the “lost wax” technique.

The oscillation originates from the attraction exerted by an electromagnet on a metallic plate, which is opposed by the reaction of the mechanical shock-absorbers.

Different speed are available to provide more or less frequent oscillation; the variation of the vibration intensity is controlled by an electronic circuit fitted with an external potentiometer allowing you to find the best working condition for every type of investment, every casting ring size or any type of mould to be filled.

INSTALLATION, USE AND MAINTENANCE

Place your vibrator on a solid surface to ensure the sucker feet to have a firm grip and to avoid any power leakage.

Connect the electrical cable to an earthed 220 v - 50 Hz socket.

Always set the potentiometer to minimum before switching on the vibrator to avoid excessive power absorption which may damage the control circuit.

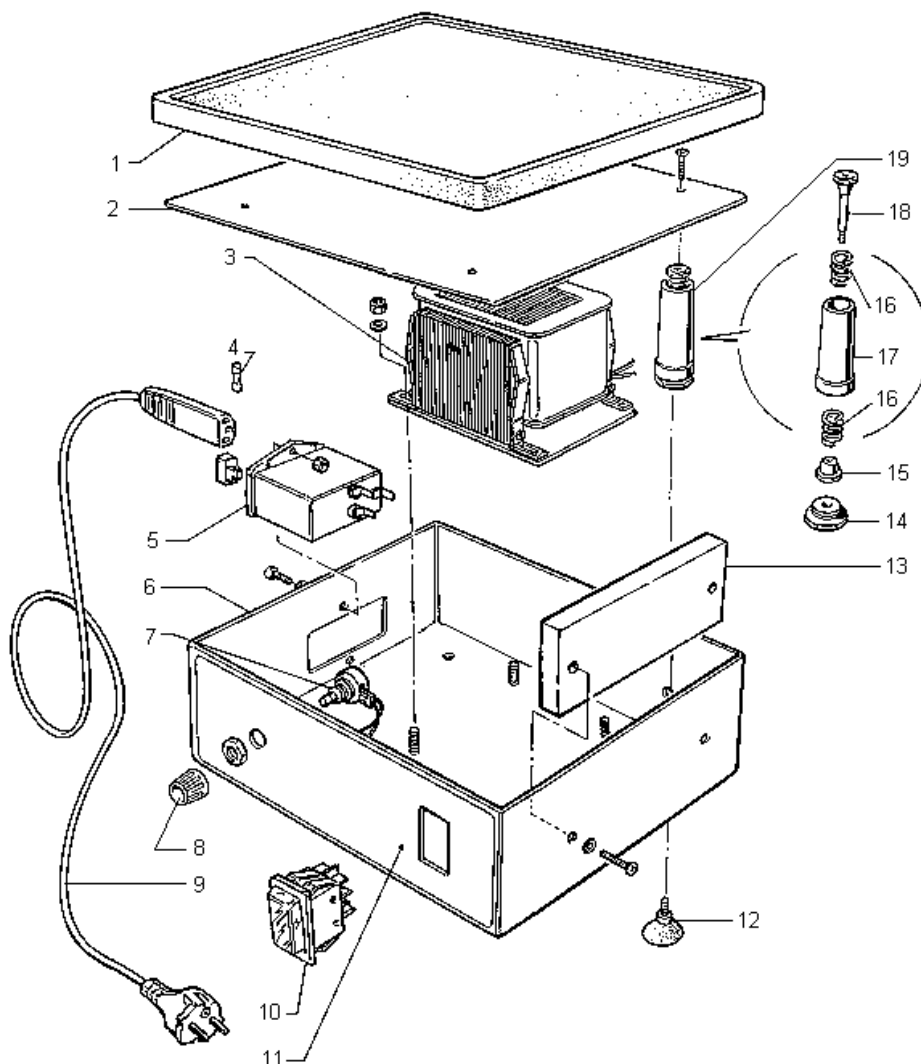
We recommend to hold the casting rings in place during operation or to distribute them evenly on the rubber cover.

<u>/!\ ATTENTION:</u>	Non-stop use is possible up to a maximum of 4 hours; after that time, wait for at least 1 hour to allow your vibrator to cool down.
<u>/!\ ATTENTION:</u>	Always disconnect the machine before any maintenance operation inside the machine.
<u>/!\ ATTENTION:</u>	The intensity of vibration is related to the maximum permissible load of the various models, therefore, the best performance is achieved with a full load.
<u>/!\ WARNING:</u>	It is recommended that the rubber cover be lifted and cleaned periodically to remove investment residuals which may accumulate and harden.

- No specific maintenance is required, but we suggest a check is made at least twice a year to ensure the sucker feet are properly locked. Should a mechanical component loosen due to the effects of continuous vibrations, the noise of the machine will increase considerably and performance will be seriously affected.

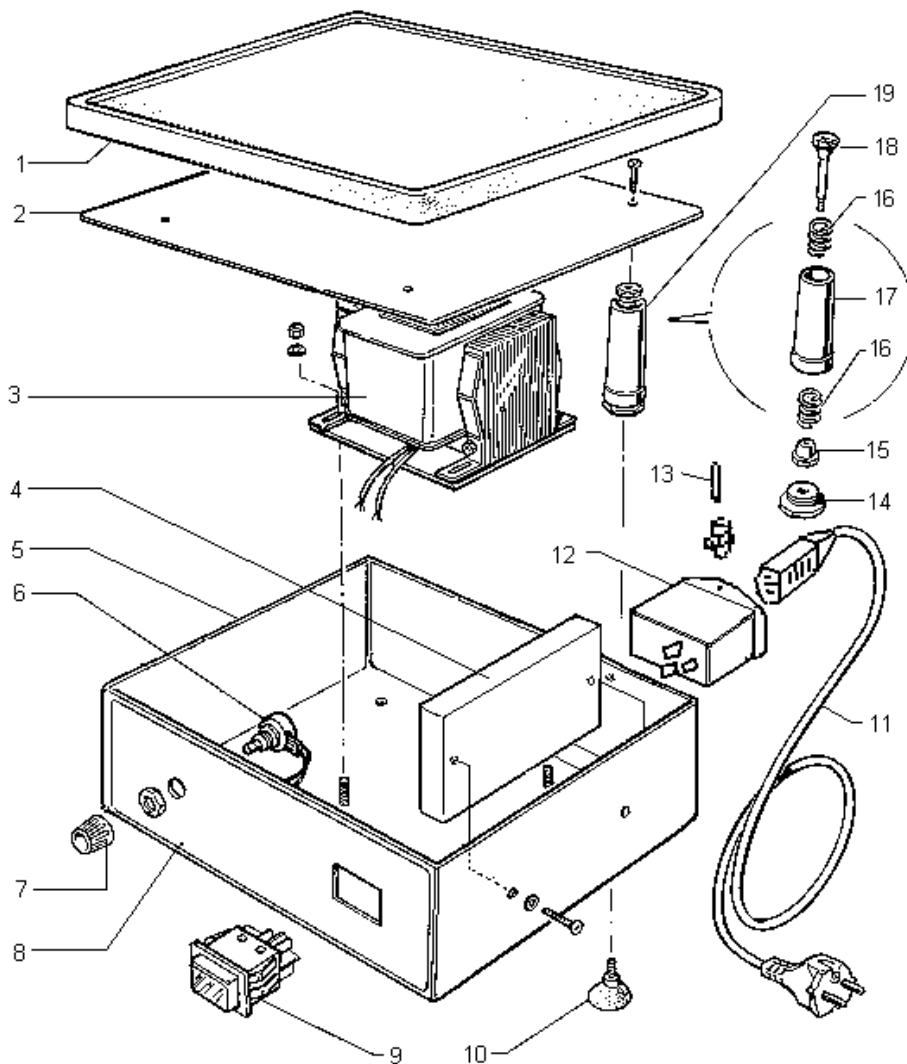
EXPLODED DRAWING AND SPARE-PART LIST OF THE VIBRATOR **MINIEXPORT**

N.	CODE	DESCRIPTION
1	RVM004	RUBBER COVER
2	RVM002	IRON PLATE
3	RCV017	ELECTROMAGNETIC UNIT
4	NEA070	FUSE 5x20 - 3.15A
5	NEC131	SET OF PLUG + FILTER + FUSE-HOLDER
6	----	METALLIC BODY
7	RCV027	POTENTIOMETER
8	NVT111	POTENTIOMETER KNOB
9	NEV013	ELECTRIC CABLE WITH PLUG AND SOCKET
10	NEC016	LIGHT SWITCH
11	RVM029	MARK LABEL
12	RCV006	SUCKER FEET
13	RCV025	MODULE FOR VOLTAGE REGULATION
14	RCV022	PLUG FOR SHOCK-ABSORBER
15	RCV016	RING NUT FOR SPRING
16	RCV014	SPRING
17	RCV011	SHOCK-ABSORBER CASE
18	RCV015	RING NUT FOR SPRING
19	RCV501	SHOCK-ABSORBER COMPLETE



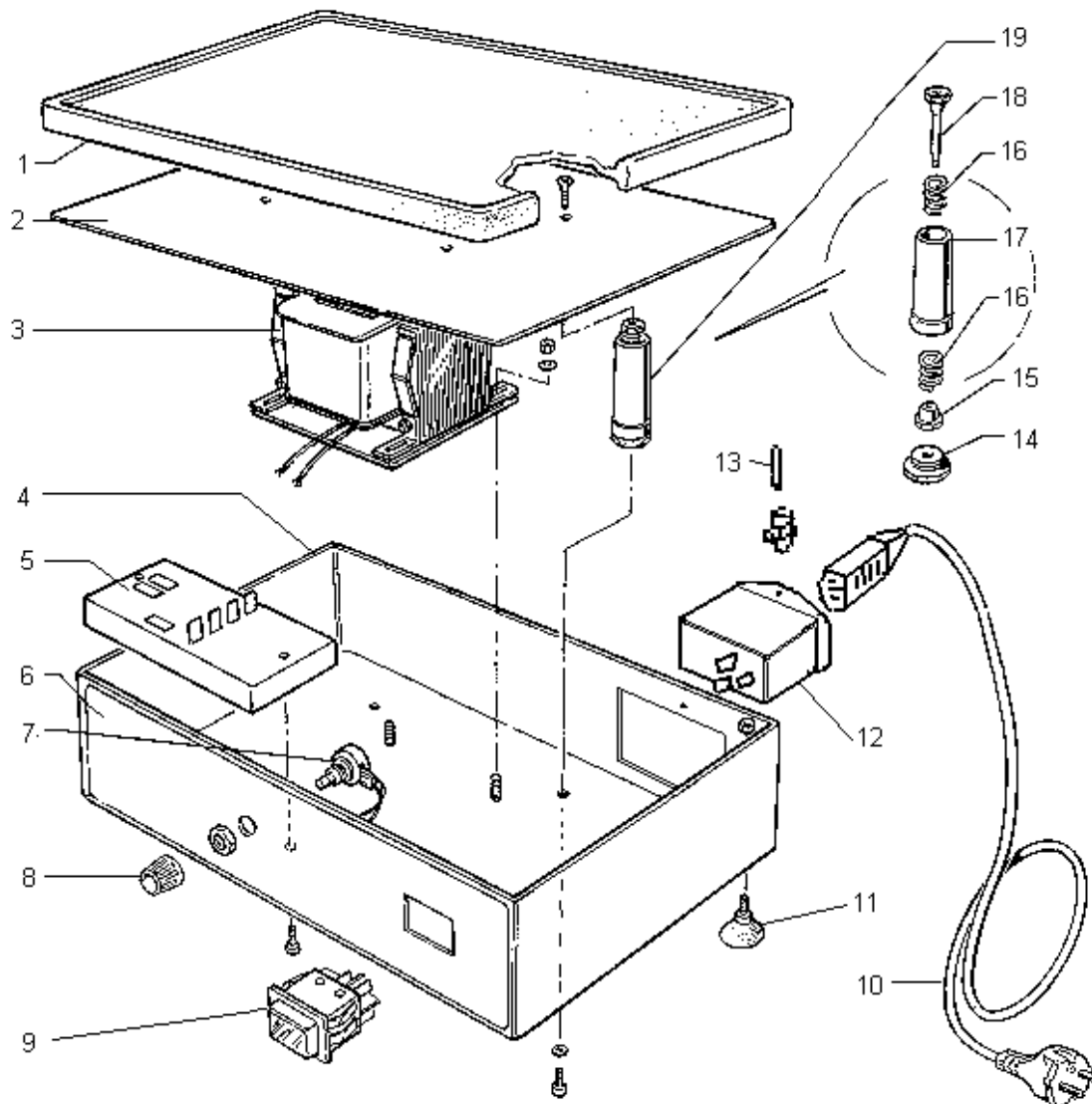
EXPLODED DRAWING AND SPARE-PART LIST OF THE VIBRATOR **MIDIEXPORT**

N.	CODE	DESCRIPTION
1	RVD004	RUBBER COVER
2	RVD002	STEEL PLATE
3	RCV017	ELECTROMAGNETIC UNIT
4	RCV025	ELECTRONIC UNIT
5	----	METALLIC BODY
6	RCV027	POTENTIOMETER
7	NVT111	POTENTIOMETER KNOB
8	RVD013	MARK LABEL
9	NEC016	LIGHT SWITCH
10	RCV006	SUCKER FEET
11	NEV013	3x1 ELECTRICAL CABLE WITH PLUG/SOCKET
12	NEC131	PLUG-FILTER-FUSE HOLDER UNIT
13	NEA070	3,15A FUSE
14	RCV022	CLOSING PLUG
15	RCV016	RING NUT FOR SPRING
16	RCV014	SPRING
17	RCV011	SHOCK-ABSORBER CASE
18	RCV015	RING NUT FOR SPRING
19	RCV501	SHOCK-ABSORBER COMPLETE



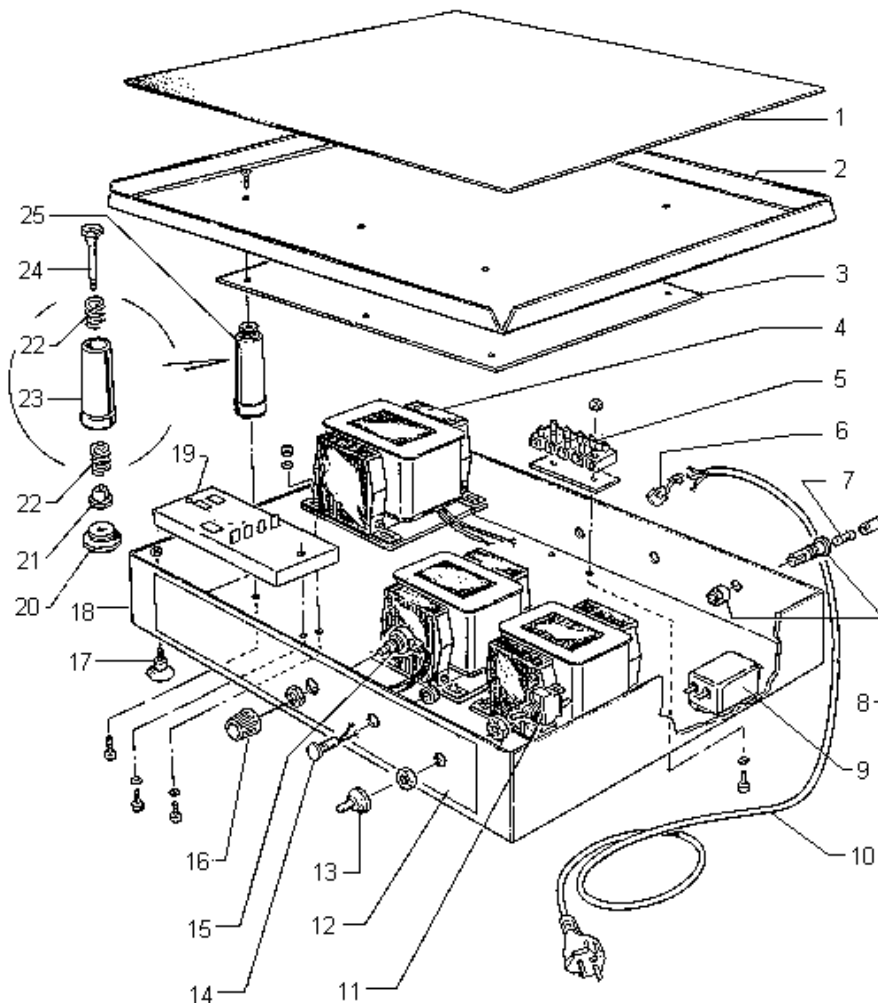
EXPLODED DRAWING AND SPARE-PART LIST OF THE VIBRATOR EXPORT-2

N.	CODE	DESCRIPTION
1	RVX004	RUBBER COVER
2	RVX002	STEEL PLATE
3	RCV017	ELECTROMAGNETIC UNIT
4	----	METALLIC BODY
5	RCV025	ELECTRONIC GROUP
6	RVX012	MARK LABEL
7	RCV027	POTENTIOMETER
8	NVT111	POTENTIOMETER KNOB
9	NEC016	LIGHT SWITCH
11	RCV006	SUCKER FEET
12	NEC131	SET OF PLUG – FILTER – FUSE-HOLDER
13	NEA060	3,15 A FUSE
14	RCV022	CLOSING PLUG
15	RCV016	RING NUT FOR SPRING
16	RCV014	SPRING
17	RCV011	SHOCK-ABSORBER CASE
18	RCV015	RING NUT FOR SPRING
19	RCV501	SHOCK-ABSORBER COMPLETE



EXPLODED DRAWING AND SPARE-PART LIST OF THE VIBRATOR **MAXI-EXPORT**

N.	CODE	DESCRIPTION
1	RVMA004	STEEL SUPPORT ON COVER
2	RVMA002	METALLIC PLATE
3	RVME004	STEEL PROTECTION
4	RCV017	ELECTROMAGNETIC UNIT
5	NEA050	TERMINAL BOARD
6	NEA106	CABLE LOCKING RING
7	NEA072	16 A FUSE
8	NEA062	FUSE-HOLDER
9	NEC133	DOUBLE CELL NETWORK FILTER
10	NEV009	RUBBER COVER FOR SHUTTER
11	NEC013	LEVER SWITCH (COMPLETE)
12	RVMA010	MARK LABEL
13	NEC009	RUBBER PROTECTION FOR SWITCH
14	NEA033	WARNING LAMP
15	RCV027	POTENTIOMETER
16	NVT111	POTENTIOMETER KNOB
17	RCV006	SUCKER FEET
18	----	METALLIC BODY
19	RCV025	ELECTRONIC UNIT
20	RCV022	CLOSING CAP
21	RCV016	RING NUT FOR SPRING
22	RCV014	SPRING
23	RCV011A	SHOCK-ABSORBER CASE
24	RCV015	RING NUT FOR SPRING
25	RCV501	SHOCK-ABSORBER COMPLETE

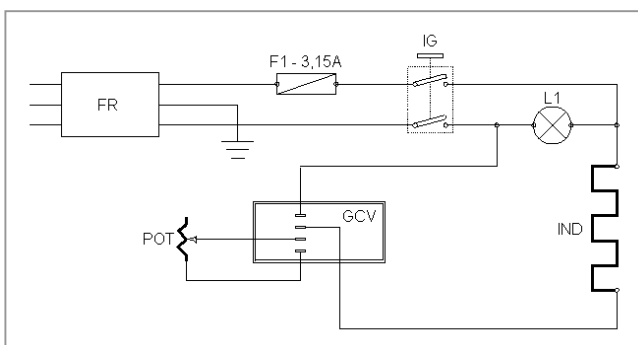


TECHNICAL SPECIFICATIONS

DESCRIPTION	MINIEXPORT	MIDIEXPORT	EXPORT - 2	MAXI - 2
Cover mm	230 x 140	220 x 200	350 x 250	600 x 400
Height mm	110	110	110	110
Net Weight kg	5,5	6,7	10	23
Gross Weight kg	6,5	7,5	11	25
Absorption	230 v - 50 Hz			
Feeding Tension	165 W 0,8 A	165 W 0,8 A	165 W 0,8 A	500 W 2,3 A
Max. Load Kg	6	8	10	30
N° Cast Rings Ø 90	2	4	6	18

WIRING DIAGRAM

SYM.	DESCRIPTION
IG	Main Switch
F1	Fuse
GCV	Vibration control unit
POT	Potentiometer
IND	Inductance
FR	Anti-jamming Filter
L1	Warning Lamp (Maxi)



REFERENCE REGULATIONS AND TEST PROCEDURES

The vibrator is mass-manufactured by DENTALFARM in compliance with technical and safety rules in force, as provided for by the EEC 2006/42 Community Directive on Machinery.

Careful inspection and full routine testing is carried out singularly on each machine which is furtherly tested by an automatic test installation assuring compliance with the fixed limits.

DEMOLITION AND WASTE DISPOSAL

According to International regulations, this unit has been classified as AEE (electric and electronic device, whose correct operation depends on electric currents and electromagnetic fields) and as a consequence, at the end of its lifetime, it can not be treated as normal waste material but it must be disposed separately, complying with the Directive 2002/96/CE.



DENTALFARM s.r.l.

Via Susa, 9/a - 10138 TORINO - ITALY

☎ (+39) 011/4346632 - (+39) 011/4346588

📠 (+39) 011/ 4346366 - e-mail info@dentalfarm.it

www.dentalfarm.it