

DESIGN

EDITION

STYLE



KAVO
Dental Excellence





KAVO

STYLE



Good design is a statement.

That's why we have developed a Design Edition that fits powerfully into a stylish, urban design concept evoking modernity and quality. A fascinating symbiosis between innovation, technology and aesthetics that embodies the highest standards of dental treatment.

In the triad of design, technology and interiors, the Style Edition exhibits perfection down to the smallest detail. The all-round matt paintwork, which is unusual for treatment units, in combination with a subtly structured film in elegant grey and soft, handmade upholstery are real highlights.

EXCLUSIVELY FOR THE
ESTETICA E70/E80 VISION

GRAPHITE

ESTETICA E70/E80 VISION



The timeless design of the Style Edition is perfectly complemented by the quality of the RELAXline soft upholstery. All three of the current RELAXline colours complement the body of the device. Naturally, the Design Edition Style can also be combined with your favourite colour from the standard range.

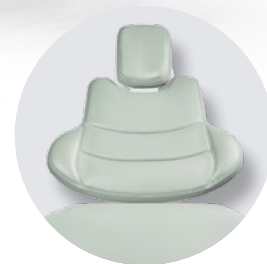
Comfort backrest
RELAXline Graphite



The matt surface of the body,
combined with the glossy cover,
conveys simple elegance.

AGAVE

ESTETICA E70/E80 VISION



Progress backrest
RELAXline Agave

CASHMERE

ESTETICA E70/E80 VISION



Progress backrest
RELAXline Cashmere

URBAN POWER

The minimised, straight lines, expansive surfaces in subdued colours and strong materials such as leather, steel and wood give this style its sovereignty and power.

Simple, classic and cool, the Style Edition with its graphite upholstery integrates effortlessly into the ensemble.



All products shown and captioned in this catalogue are available at www.maisonsdumonde.com.



*BLACK SPHERE -
Metal floor lamp*



MAJESTIC - Armchair



CLEAN CONTRAST

Contrasts in perfect harmony: The timeless appeal of gently-contrasting light and dark colours not only finds perfect interplay in the treatment unit; it also provides an endless basis for a clean, yet cosy practice furnishing concept.

*SNOOP - 3-seater sofa,
quilted and mottled
with light grey*



*CORTE - Oval side table
in black metal*



*ADILI - Woven
cotton pillow*

*OSANI - Cotton
pillow case*



*ENAEL - Decorative
stoneware vase*

SOPHISTICATED CLASSIC

Light nuances, natural materials and a hint of patina – this also contributes to a stylish, relaxed atmosphere amidst the hustle and bustle of everyday practice.



CHESTER - Painted relief image



*MORGAN -
4-seater vintage sofa*



*ALEY - Floor lamp made of
gold-coloured metal with
a spherical shade*



NATTAT - Cotton blanket



*ROCKEFELLER - Coffee table
made of corrugated metal*



SIMPLY ELEGANT

Inviting, friendly and cosy – this is what a modern practice can look like. A colour scheme in muted hues such as beige, greige and cashmere combines well with this. These tones create a harmonious, warm, elegant and comfortable look. A perfect match: natural materials like oak, linen and fine wool.





*SENDAI - Cabinet with
2 doors in slatted optic*



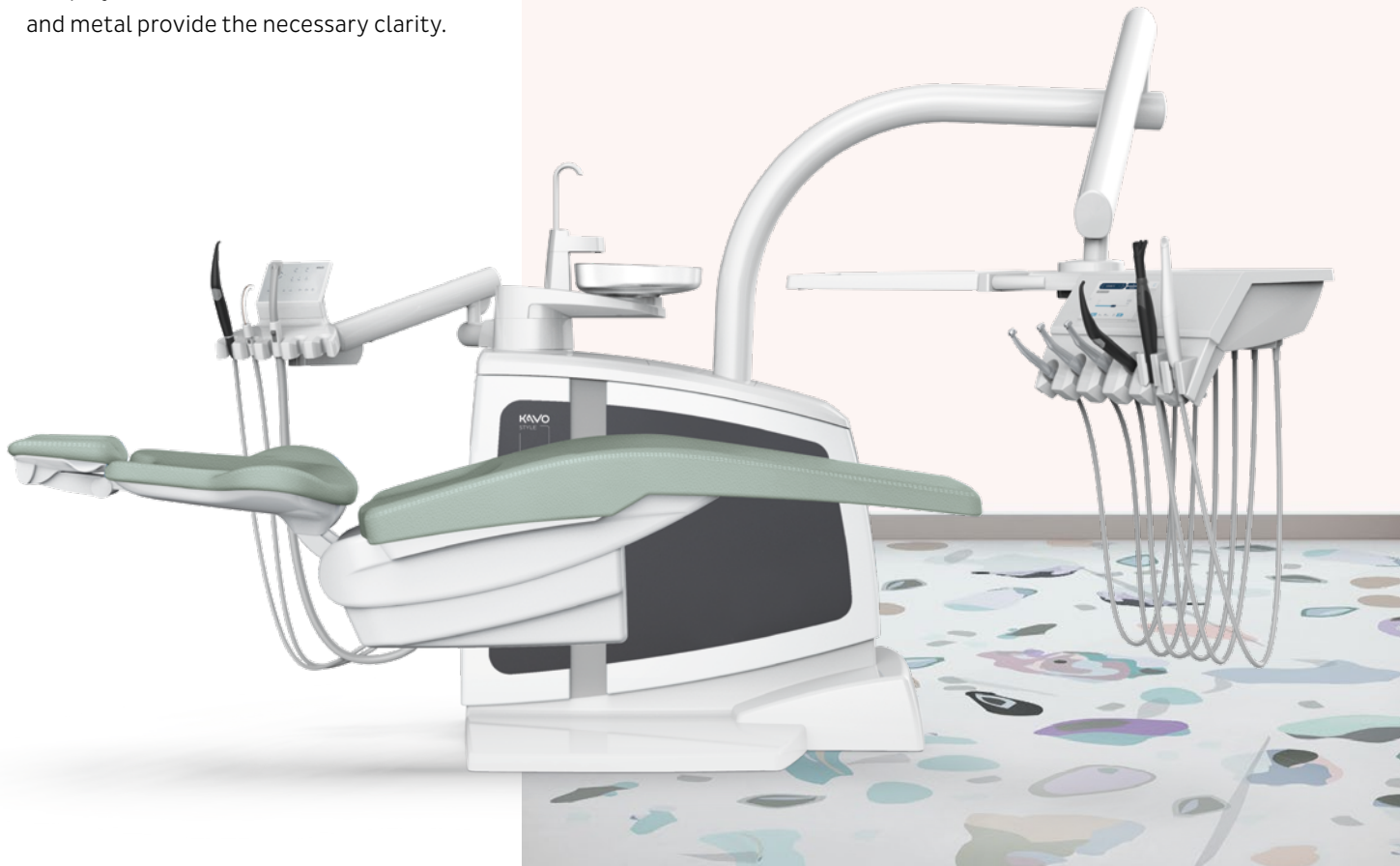
*COLE - Ecrú armchair with
a metal, black satin finish*



*IVONIC - Wire face figure
made of black metal and
mango wood*

CANDY COLOURS

Be brave and let the floor take centre stage. The foundation is already in place, in the truest sense of the word. Pastel tones come together with round shapes. Too playful? No! Materials such as stone and metal provide the necessary clarity.



*DALHIA - Clock in pink
and matt gold*



*GRANITO - Round terrazzo
garden coffee table*



*MARCELLINI -
Round bar seat*



NATURALLY ELEGANT

This look is elegant, fresh and très chic. Dark nuances create calm, while agave brings a cool freshness into play. The picture is rounded off by dark furniture with Viennese wickerwork and gold-yellow details and accessories.

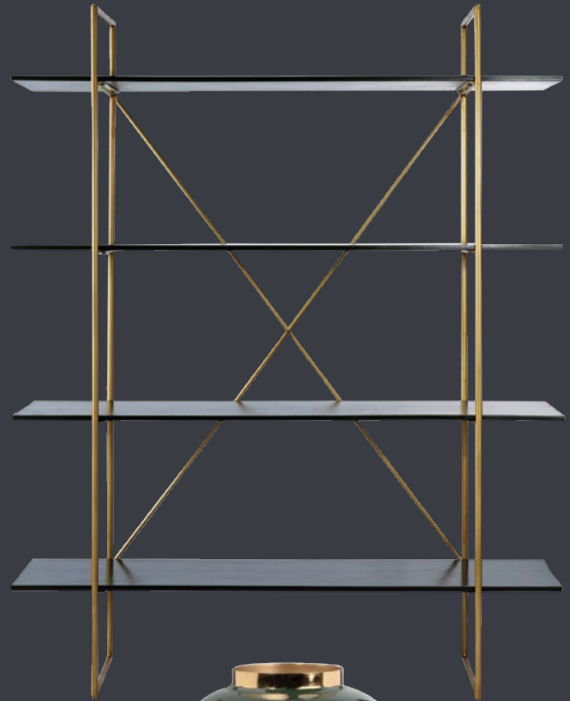




*LORETO - Sideboard with
3 doors made of woven rattan*



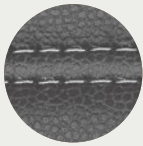
*JAGGER - Shelf made of gold-coloured
metal and solid black mango wood*



*Ball vase in metal, green
and gold*

Matching upholstery colours

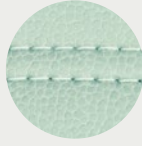
RELAXline soft upholstery



Graphite



Cashmere



Agave

Standard upholstery



Black



Anthracite



Pearl grey



Berry



The Style Edition is available exclusively for the ESTETICA E70/E80 Vision and can be combined with all KaVo upholstery colours. The selection shown here is not exhaustive and should serve merely as a suggestion.

All products shown and captioned in this catalogue are available at www.maisonsdumonde.com.